

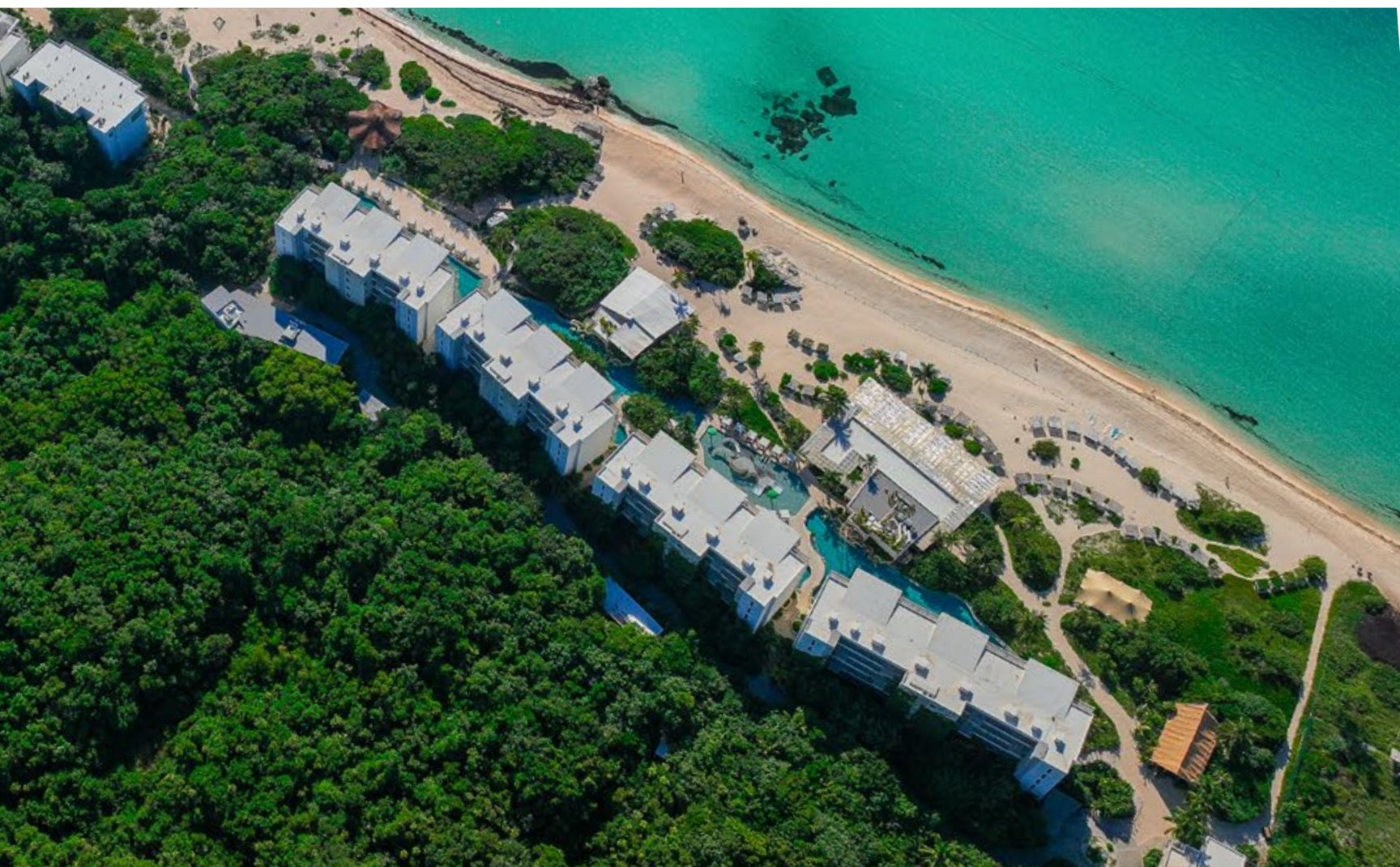


Palmaia is more than a resort. It is a vision of wellness that does not exist elsewhere. It is a concept that recognizes that the healing process is a journey, not a destination and that to travel it, one needs to balance body, mind, and soul.

At Palmaia, spirituality and growth go hand in hand with the joy of experiences that nourish inside and out. We provide a delightful, conscious food experience, relaxation treatments, music sessions and activities to connect with the community.

## LOCATION

Strategically situated at the tail end of the most beautiful beach in the Riviera Maya and surrounded by more than 988 acres of undisturbed jungle and a kilometer of pristine beach.





## FACILITIES

- 234 Oceanfront Suites • 4 à la carte Restaurants
  - 1 Health Café • 1 Vegan Taco Food Truck
- 1 Beach Club • 2 poolside bars • 1 Spa in the Jungle
- 1 Temazcal • 1 Jungle Gym • 3 cenotes • Atlas Lounge

## BEACH & POOLS

- 1 km of white sand contrasting with the blues of the Caribbean • 4 infinity pools with views of the beach and mangroves with an Adult-Only section separated from the Family section • 2 Jacuzzi-style pools that blend with the jungle in front of the beach • Balinese beds in the pools with palapas on the beach

## SPACES FOR AOL PRACTICE

An array of indoor and outdoor spaces where all the holistic programming takes place:

- Rituals Deck • Mangrove Deck • Aisuru • Gypsy Tent
- Ocean Tent • Psychedelic Mushroom • Beach Temple

## ACCOMMODATIONS

234 oceanfront suites and 14 different configurations to ensure the conditions that the traveler prefers: upper-floor suites, with a bathtub, without a bathtub, swim-ups, work suites, meditation suites, family suites, etc. There are no animal-origin elements in the room, in line with the resort's ethical values.

## SUITE FEATURES

- 50" SMART TV • 24-hour Room Service
- Minibar • Vanity mirror • Hairdryer • Nespresso coffee machine • 100% biodegradable amenities
- Individual Control for Air Conditioning • Iron & Ironing Board • Bathrobe and Slippers • Premium Bed Linen • Laptop Size Safe Box • Nightly Turndown Service • Music Network via Bluetooth • Private Terrace • Unlimited calls to Mexico, the United States and Canada • High-speed Wi-Fi



# UNRESTRICTED EXPERIENCE

As part of our Unrestricted Retreat Experience, the following services are included in the cost of the stay:



- The Architects of Life Program • Rituals of Sound
  - All Food & Beverages at our restaurants/cafés/food truck • 24-hour Room Service
  - Quality alcoholic and non-alcoholic mixology
- Children's Center with Waldorf-Inspired Activities
  - Bike Sharing Service • Fiber-Optic Wi-Fi
  - Nomadic Guides & Concierge Services
- Jungle Gym • Stand-Up Paddle Boards • And more...

# PURE CULINARY DISCOVERY

Palmaia's pure, mindful gastronomy offering is made with exquisite mostly plant-based, fresh ingredients.

For those who require it, there are also non-vegan options of the highest quality. The resort offers 4 à la carte restaurants with impeccable dinners, as well as a Healthy Café and a food truck.

## RESTAURANTS

**Lek** - High-end, Haute Mexican Cuisine. Local flavors are secretly enhanced by select spices and herbs.

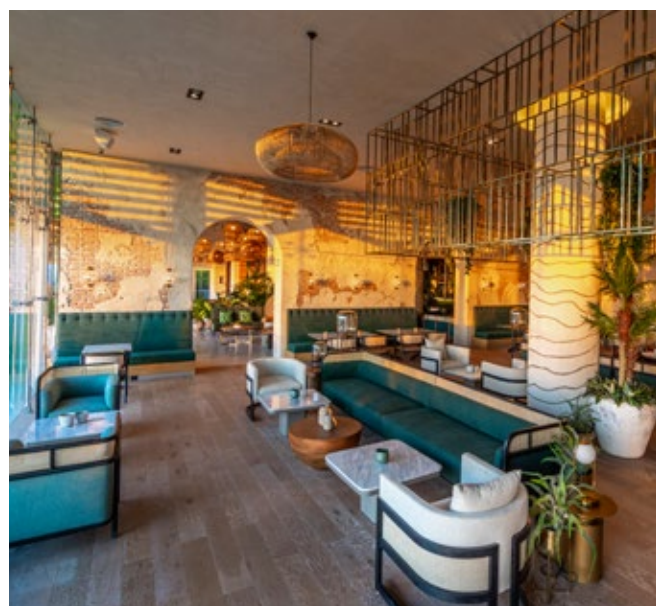
**Ume** - Fusion Asian Cuisine - Sensual fragrances, exotic flavors with Japanese influences.

**Mar de Olivo** - Mediterranean Cuisine.

**Su Casa** - Fresh, laid-back vibe of Caribbean and international food on the beach.

**Plantissa** - Healthy Café with 100% Plant-based ingredients: smoothies, bakery, sandwiches, and deli options, in a New York-Soho city eatery ambiance.

**El Caminante** - a vegan taco food truck.



# THE ARCHITECTS OF LIFE

The most important part of the journey focuses on internal growth under a carefully curated program, using ancestral healing rituals and practices taught by authentic personal spiritual guides, called “The Architects of Life” (AOL). All this exploration journey is known as “Progressive Wellness”.



## VISITING GUIDES

Guides that arrive from other regions to impart new experiences and share their healing wisdom.



## FOOD SESSIONS

An extension to your healing journey. Interactive workshops about holistic nutrition and what eating healthy means.

## ATLANTIS SPA

A Spa in the middle of the jungle, with cenotes, a temazcal, and rooms isolated by vegetation. Atlantis Spa focuses working on the 9 energy centers inspired by several ancient cultures but, most of all, the Toltecs. \*Extra costs apply.



## RITUALS OF SOUND

Palmaia's Eolo Beach Club, has top-notch libations and cocktails (with or without alcohol), accompanied by live DJ's playing rhythms specially curated for the place.



## AWEN

Palmaia's Children Center, adhered to the Waldorf philosophy, which promotes a device-free playground.



## DEPTH

Our curated immersions into iconic archaeological sites and real mayan culture.

\* Profit from tours goes back to the local community.



## RETREATS & GROUPS

Palmaia's ambiance and facilities are perfect to host external Retreat Groups.

# SUITES

With a total of 234 oceanfront suites, each with a private balcony, available in 14 different designs, they manage to adapt perfectly to the tastes and needs of each guest.

## 30 OCEAN FRONT FAMILY MASTER SUITES

- Master bedroom with king-size bed, living room and private balcony • Master bathroom with double sink, shower, luxury bathtub and toilet • Secondary bedroom with bunk bed for 2 • Secondary room with sink, shower and bathroom • Max Occupancy: 2 adults and 2 children • Room size: 66 m<sup>2</sup> / Balcony size: 11 m<sup>2</sup>



## 54 OCEAN FRONT FAMILY KING SUITES

- Room with king-size bed, bunk bed for 3 children, sitting area and private balcony • Bathroom with 2 showers, 2 sinks and toilet • Max Occupancy: 3 adults and 2 children or 2 adults and 3 children • Room size: 50 m<sup>2</sup> / Balcony size: 10 m<sup>2</sup>

**14 OCEAN FRONT KING SUITES WITH BATHTUB  
+ 18 in ADULTS ONLY BUILDING**

- Room with king-size bed, living room, and private balcony • Bathroom with shower, bathtub and bathroom • Max Occupancy: 2 adults • Room size: 50 m<sup>2</sup> / Balcony size: 10 m<sup>2</sup>



**23 OCEAN FRONT KING SUITES  
+ 11 in ADULTS ONLY BUILDING with desk**

- Bedroom with king-size bed, living room and private balcony • Bathroom with 2 showers, 2 sinks and toilet
- Max Occupancy: 2 adults • Room size: 50 m<sup>2</sup> (538 ft<sup>2</sup>) / Balcony size: 10 m<sup>2</sup> (107 ft<sup>2</sup>)

**22 OCEAN FRONT QUEEN SUITES  
+ 6 in ADULTS ONLY BUILDING**

- Room with two queen-size beds with a sitting area, a sofa-bed, and a private balcony • Bathroom with 2 showers and 2 sinks • Max Occupancy: 2 adults and 1 child or 1 adult and 2 children or 3 adults • Room Size: 50 m<sup>2</sup> / Balcony Size: 10 m<sup>2</sup>

**20 SWIM OUT KING SUITES WITH BATHTUB  
+ 6 in ADULTS ONLY BUILDING**

- Guest room with king-size bed, living room and private balcony located directly on one of the hotel's 4 infinity pools • Bathroom with shower and luxury bathtub • Max Occupancy: 2 adults • Room size: 50 m<sup>2</sup> / Balcony size: 10 m<sup>2</sup>



**4 SWIM-OUT QUEEN SUITES  
+ 4 in ADULTS ONLY BUILDING**

- Room with two queen-size beds with a sitting area, a sofa-bed, and a private balcony located directly in one of the hotel's 4 infinity pools • Bathroom with 2 showers and 2 sinks • Max Occupancy: 2 adults and 1 child or 1 adult and 2 children or 3 adults • Room size: 50 m<sup>2</sup> / Balcony size: 10 m<sup>2</sup>

**8 OCEAN FRONT MEDITATION SUITES  
2 SWIM-OUT MEDITATION SUITES  
(ADULTS ONLY BUILDING)**

Suites specially designed to elevate your daily practice, turning your stay into an authentic yoga retreat.

- Master bedroom with king-size bed, living room and private balcony • Master bathroom with double sink, shower, luxury bathtub, and toilet • Secondary room with a secluded and harmonious space ideal for meditation or yoga • Secondary bathroom with sink, shower, and toilet • Max Occupancy: 2 adults • Room size: 66 m<sup>2</sup> / Balcony size: 11 m<sup>2</sup>



Palmaia, The House of AiA – Paseo Xaman-Ha, Lote 1,  
Playacar, 77710 – Playa del Carmen, Q.R. – México

**USA:** +1 863-485-8268 **Canada:** +1 647-691-6812

**UK:** +44 203-807-4498 **Mexico:** +52 5585266112

#ThePathToABetterYou